



Healy Public Schools USD 468

5006 North Dodge Rd, Healy, KS 67850
(620) 398-2248
usd468.org

District Accreditation Status: **Accredited**
ESSA Annual Meaningful Differentiation: **2020 data not available**
Grades: **PK-12**
Superintendent: **Jeff Jones**

Demographics



44 Students
 African American 0.00%
 Hispanic 25.00%
 Other 0.00%
 White 75.00%

Academically Prepared for Postsecondary Success

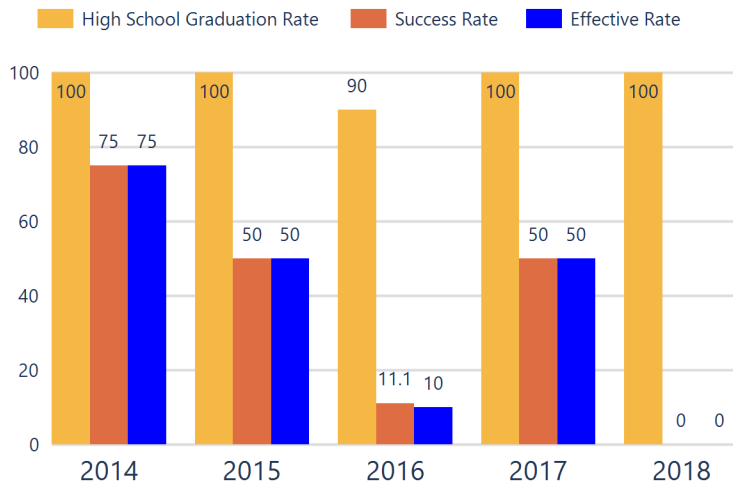
The percentage of students who scored at Levels 3 and 4 on the state assessment.

Assessment scores are not available for the 2020 school year.

District Kansans Can Star Recognition

	Gold	Silver	Bronze	Copper
Social-Emotional Growth				
Kindergarten Readiness				
Individual Plan of Study				
Academically Prepared for Postsecondary				
Civic Engagement				
High School Graduation				
Postsecondary Success				

District Postsecondary Effectiveness



Kansans CAN lead the world!
Graduation
95%
 Effective Rate 70-75%

Five-Year Graduation Avg
97%

Five-Year Success Avg
38%

Five-Year Effective Avg
37%

95% Confidence Interval for the Predicted Effectiveness Rate
33.7 - 38.3%

The numerator and denominator in the Five-Year Averages contain total student counts over five years (2014-2018) and are rounded to the nearest whole number.

- Graduation Rate:** The 4-year adjusted cohort graduation rate is the number of students who graduate in four years with a regular high school diploma divided by the number of students who entered high school as 9th graders four years earlier (adjusting for transfers in and out).
- Success Rate:** A student must meet one of the four following outcomes within two years of High School graduation.
 - Student earned an Industry Recognized Certification while in High School.
 - Student earned a Postsecondary Certificate.
 - Student earned a Postsecondary Degree.
 - Student enrolled in Postsecondary in both the first and second year following High School graduation.
- Effective Rate:** The calculated Graduation Rate multiplied by the calculated Success Rate.

GRADUATION RATE

The four-year adjusted cohort graduation rate is the percentage of students in a cohort, adjusted for transfers into and out of the school, district, or state, who graduate with a regular high school diploma within four years of entering high school.

60.0%

State: **District ESSA Expenditures Per Pupil**

88.3

Expenditures reflect those for the normal day-to-day operation of schools as reported by the Local Education Agency. The following expenditures are excluded: capital outlay, school construction and building improvements, equipment and debt services.

\$22,323

ATTENDANCE RATE

Rate at which students are present at school, not including excused or unexcused absences.

95.7%

State: 94.5

[Click here for State Financial Accountability.](#)

State: \$12,193

CHRONIC ABSENTEEISM

Percentage of students who miss 10% or more of school days per year either with or without a valid excuse.

14.3%

State: 13.9

DROPOUT RATE

The dropout rate is calculated annually and reflects the number of seventh–twelfth grade students who drop out in any one school year. A dropout is any student who exits school between October 1 and September 30 with a dropout EXIT code AND does not re-enroll in school by September 30.

N/A

State: 1.3

Healy Public Schools USD 468

K.S.A. 72-5178 Accountability Report 2019-2020



District Academic Success

State Assessment scores are displayed by student subgroup over three years time in three subjects: Math, English Language Arts (ELA), and Science. Assessment scores are not available for the 2020 school year.

ALL STUDENTS

	2017-18			2018-19			2019-20		
	Math	ELA	Sci	Math	ELA	Sci	Math	ELA	Sci
Level 1	51.51	29.41	41.66	31.57	21.05	38.46	N/A	N/A	N/A
Level 2	30.30	50.00	50.00	57.89	42.10	38.46	N/A	N/A	N/A
Level 3	12.12	17.64	8.33	10.52	36.84	23.07	N/A	N/A	N/A
Level 4	6.06	2.94	0.00	0.00	0.00	0.00	N/A	N/A	N/A

FREE AND REDUCED LUNCH STUDENTS

	2017-18			2018-19			2019-20		
	Math	ELA	Sci	Math	ELA	Sci	Math	ELA	Sci
Level 1	52.38	36.36	N/A	28.57	21.42	N/A	N/A	N/A	N/A
Level 2	28.57	54.54	N/A	64.28	57.14	N/A	N/A	N/A	N/A
Level 3	14.28	9.09	N/A	7.14	21.42	N/A	N/A	N/A	N/A
Level 4	4.76	0.00	N/A	0.00	0.00	N/A	N/A	N/A	N/A

STUDENTS WITH DISABILITIES

	2017-18			2018-19			2019-20		
	Math	ELA	Sci	Math	ELA	Sci	Math	ELA	Sci
Level 1	N/A	N/A	N/A	N/A	N/A	N/A	N/A	N/A	N/A
Level 2	N/A	N/A	N/A	N/A	N/A	N/A	N/A	N/A	N/A
Level 3	N/A	N/A	N/A	N/A	N/A	N/A	N/A	N/A	N/A
Level 4	N/A	N/A	N/A	N/A	N/A	N/A	N/A	N/A	N/A

AFRICAN-AMERICAN STUDENTS

	2017-18			2018-19			2019-20		
	Math	ELA	Sci	Math	ELA	Sci	Math	ELA	Sci
Level 1	N/A	N/A	N/A	N/A	N/A	N/A	N/A	N/A	N/A
Level 2	N/A	N/A	N/A	N/A	N/A	N/A	N/A	N/A	N/A
Level 3	N/A	N/A	N/A	N/A	N/A	N/A	N/A	N/A	N/A
Level 4	N/A	N/A	N/A	N/A	N/A	N/A	N/A	N/A	N/A

HISPANIC STUDENTS

	2017-18			2018-19			2019-20		
	Math	ELA	Sci	Math	ELA	Sci	Math	ELA	Sci
Level 1	N/A	N/A	N/A	N/A	N/A	N/A	N/A	N/A	N/A
Level 2	N/A	N/A	N/A	N/A	N/A	N/A	N/A	N/A	N/A
Level 3	N/A	N/A	N/A	N/A	N/A	N/A	N/A	N/A	N/A
Level 4	N/A	N/A	N/A	N/A	N/A	N/A	N/A	N/A	N/A

N/A: To protect student privacy, when a subgroup has fewer than 10 students, the data are not displayed.

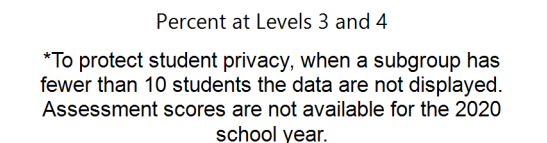
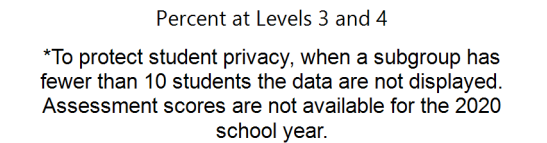
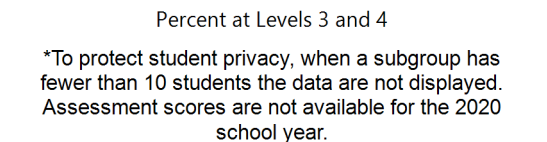
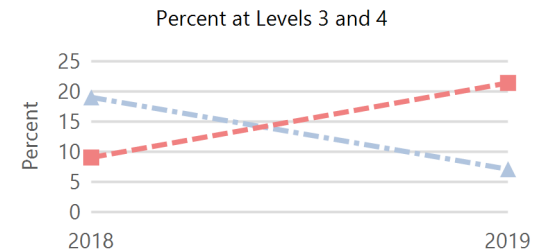
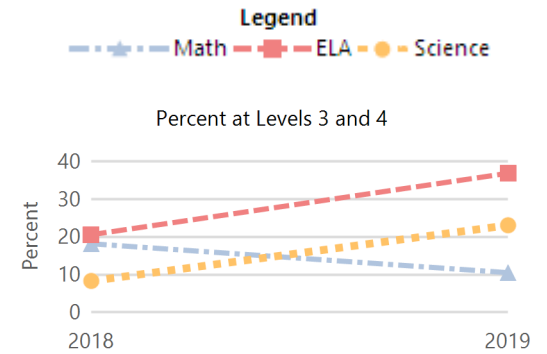
ACT Performance (2020 School Year)

ACT is a national college admissions exam that includes subject level tests in English, Math, Reading and Science. Students receive scores that range from 1 to 36 on each subject and an overall Composite score. This report provides the average Composite score for the 2020 graduating seniors who took the ACT as sophomores, juniors, or seniors.

Note: Not all eligible students completed an ACT.



Academically Prepared for Postsecondary Success



District	16.7
State	20.4